



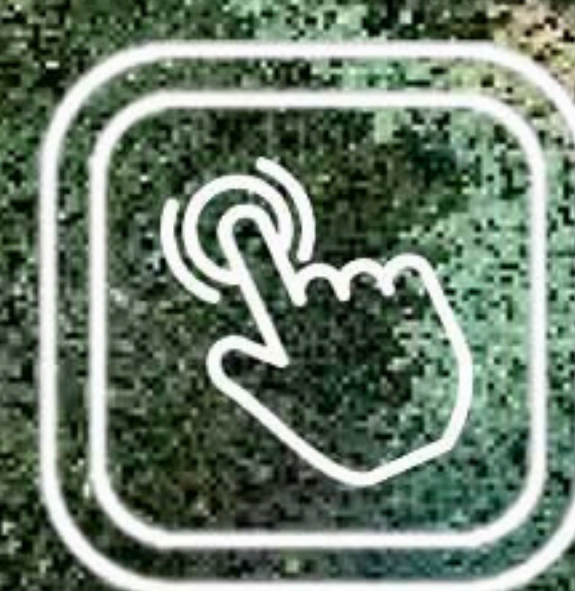
1kg



Real-time color
point cloud



360°
scanning



Easy of use

Lixel **K1**

Compact Handheld 3D Scanner

Powered by XGRIDS



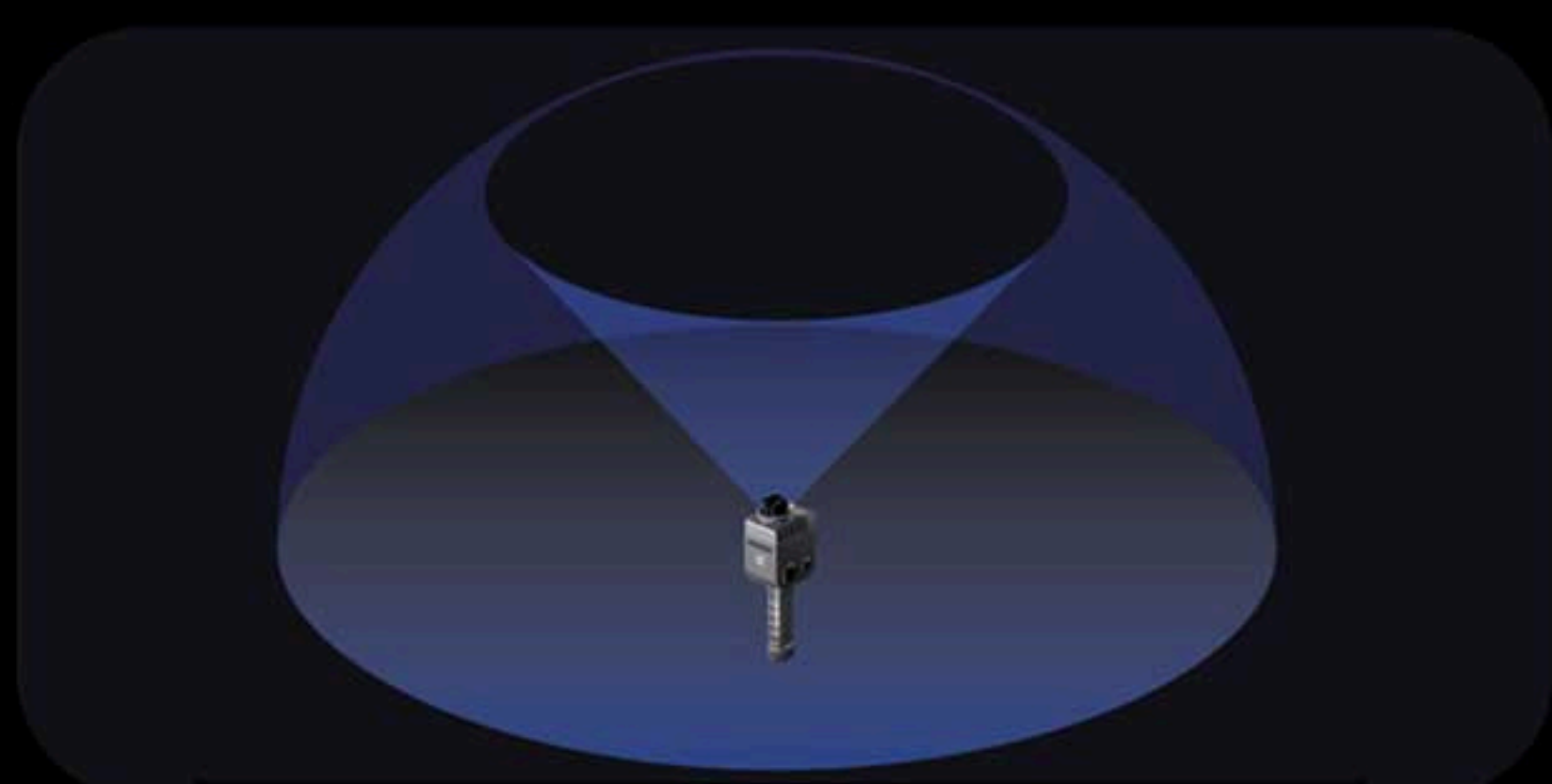
Product Introduction >>>

Lixel K1 is a compact handheld scanning and modeling device newly announced. With a lightweight body, it integrates 56 million-pixel panoramic vision modules and a 360° LiDAR, capable of real-time generation of centimeter-level colored 3D models. Tailored for professionals, small to medium-sized businesses, and 3D enthusiasts, it offers a convenient solution for 3D capture and modeling.



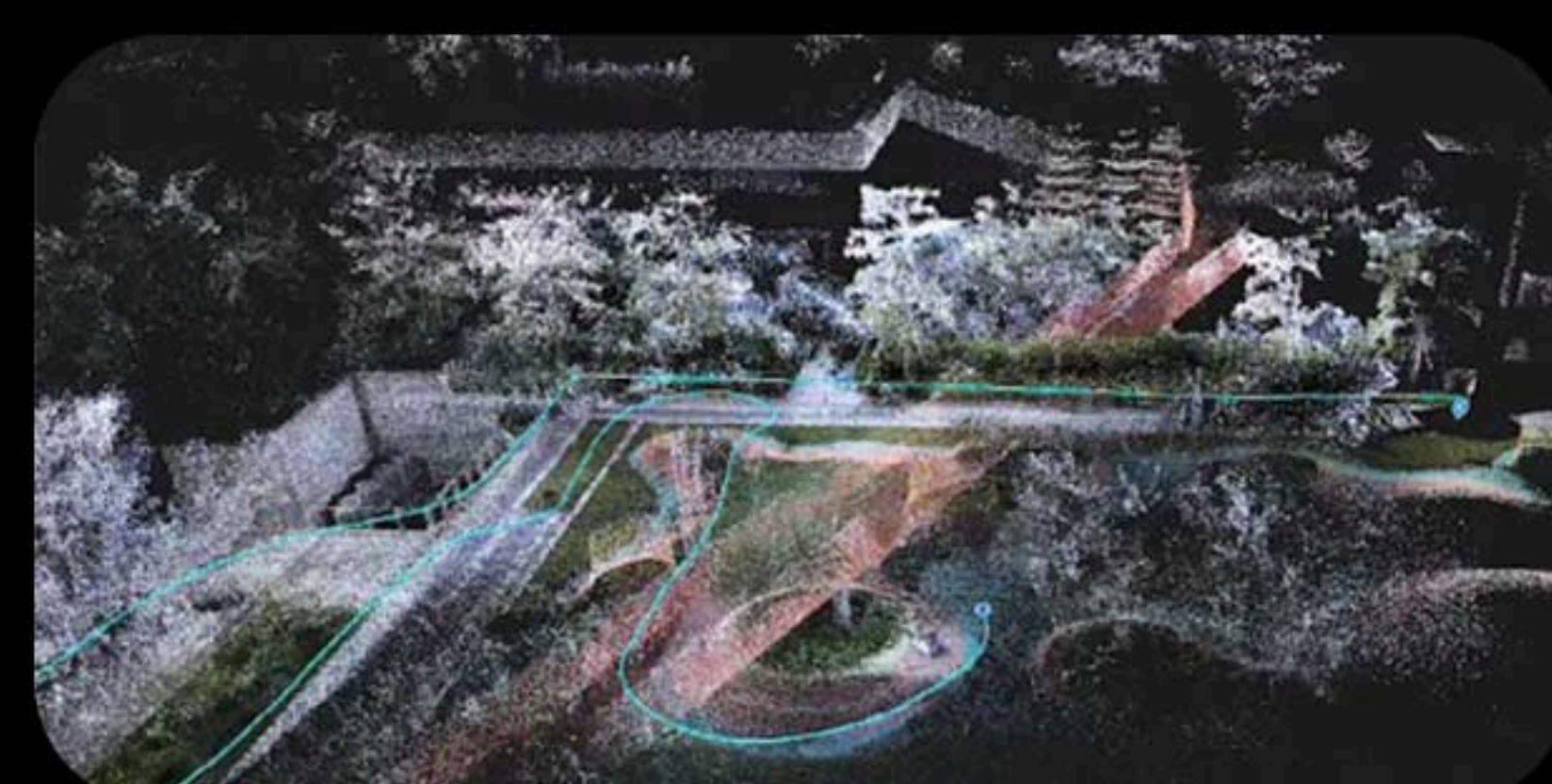
■ Compact & Lightweight

Adopting the aluminum alloy material for K1's body, makes its weight only 1kg including the battery, extremely light and convenient to carry, easier for work.



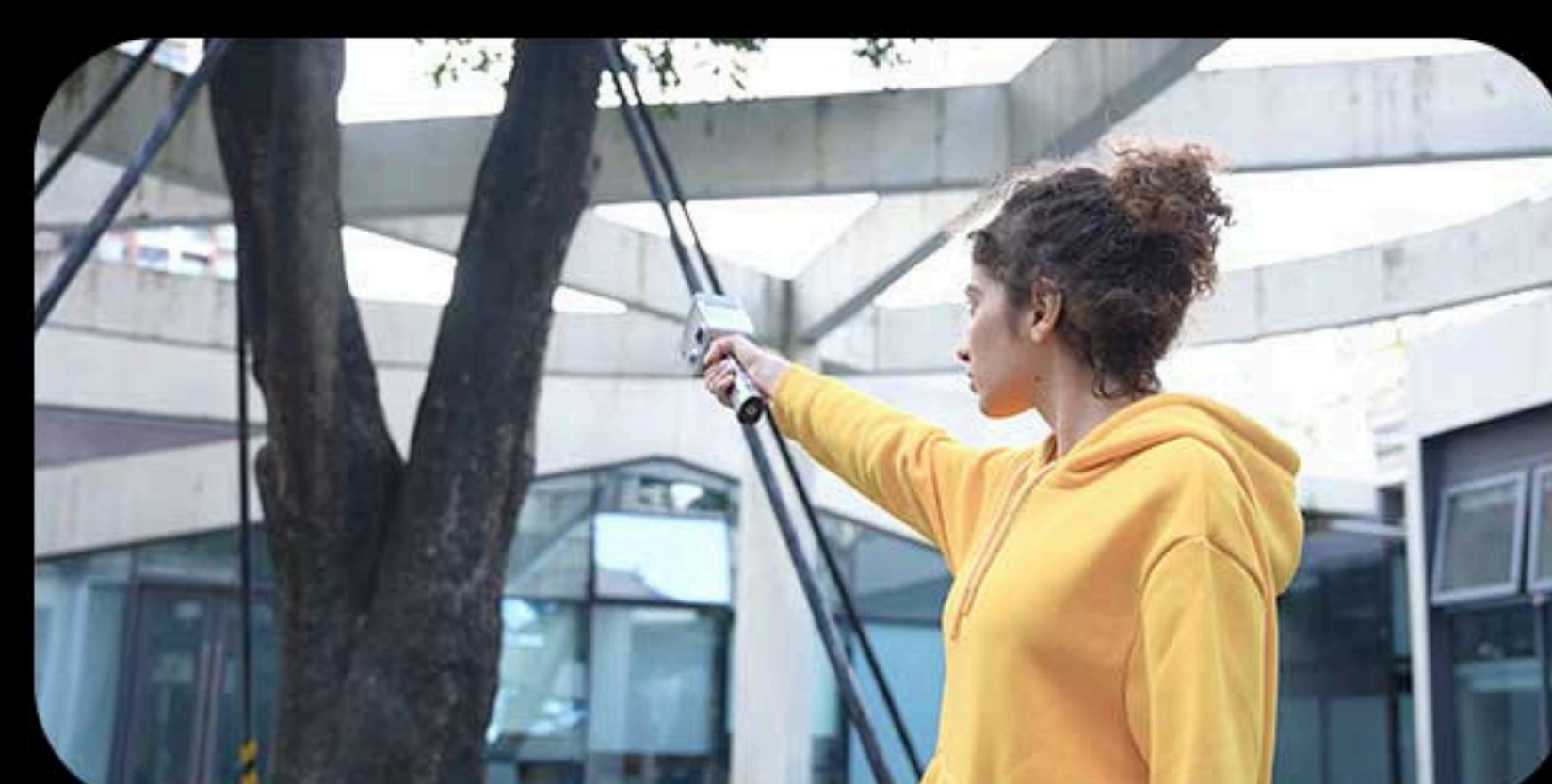
■ Multi-line lidar, panoramic collection, no omissions

Equipped with a 40-line lidar with a point rate of 200,000 points/sec, 360° laser horizontal FOV, capturing richer details of objects and no omissions for scanning. Moreover, the $\pm 1.2\text{cm}$ accuracy and 40m measurement distance can meet the demands of the most scenes.



■ Real-time true color, delicate presentation

Highly integrated with 56MP panoramic vision module, realize the 360°*360° true panoramic vision, coupling with high-performance computing module, the more exquisite and excellent real-time true color point clouds can be provided on controller APP.



■ Collect as you like

Built-in IMU sensor allows you to hold the device in a certain tilt angle for scanning without having to keep the body upright, making the operation easier.



■ Easy of use, and economic

The operation of K1 is easy to learn and understand, that can make the ordinary people become professional talents of 3D scanning and modeling. A single person can efficiently complete outdoor scanning missions, greatly boosting the productivity.

APPLICATION SCENARIOS



Scan to Bim



Culture & Tourism



Digital Twins



Engineering survey



Filming & Gaming

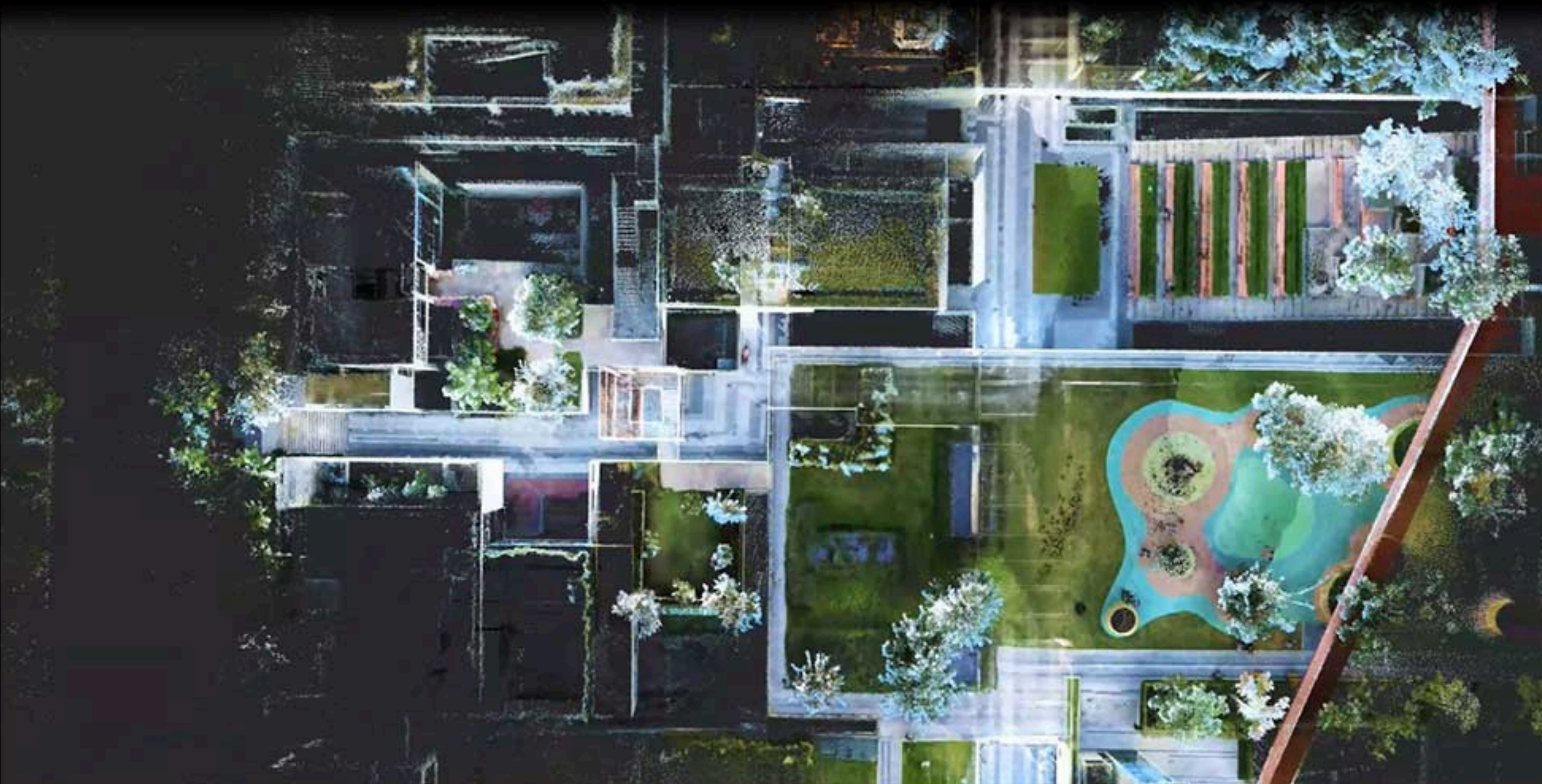


Agricultural and forestry survey

Software

PC

LixelStudio



An all-in-one 3D post-processing software offers a range of features, including point cloud viewing, editing, modeling generation, and post-processing.

APP

LixelGO



It is a mobile APP for the regular scanning workflow operation, preview of scanning results, and one-screen monitoring of device status.

Specification

Device Performance

Power input	14.4V
Power consumption	<20W
Weight	1kg
Data interface	USB3.1 Gen2
Storage Capacity	TF card 256G (Replaceable)
Connection mode	Wifi/Bluetooth
Operating temperature	-20°C~50°C
Protection level	IP54
Product shell	Navigational Aluminum
Power supply	Fast-lock battery/external power
Operating Time	1.5h
Battery capacity	28.8wh
Number of Cameras	4
Visual-Aided Positioning	Supported
APP WiFi distance	20m
RTK module	Supported

Data & Storage

Calculating mode	Real-time calculating/ Mixed calculating
Calculating software	Lixel Studio post-processing software for Win
Point Cloud Format	.Las
Color point cloud	Supported

Scan Performance

Laser lines	40
Laser Class	Class1/905nm
Relative Accuracy	1.2cm
Absolute Accuracy	3cm
Repeat Accuracy	2cm
Horizontal Accuracy	0.015°
Working Range	0.1m~40m@10%,70m@80%
LiDar FOV	360°*-7~+52°
Scan mode	Mobile
Scan speed	200,000 points/s
Resume Scanning from Breakpoint	Supported

Visual Module

Camera FOV	Color panorama HDV 360°*360°
Camera resolution	56million